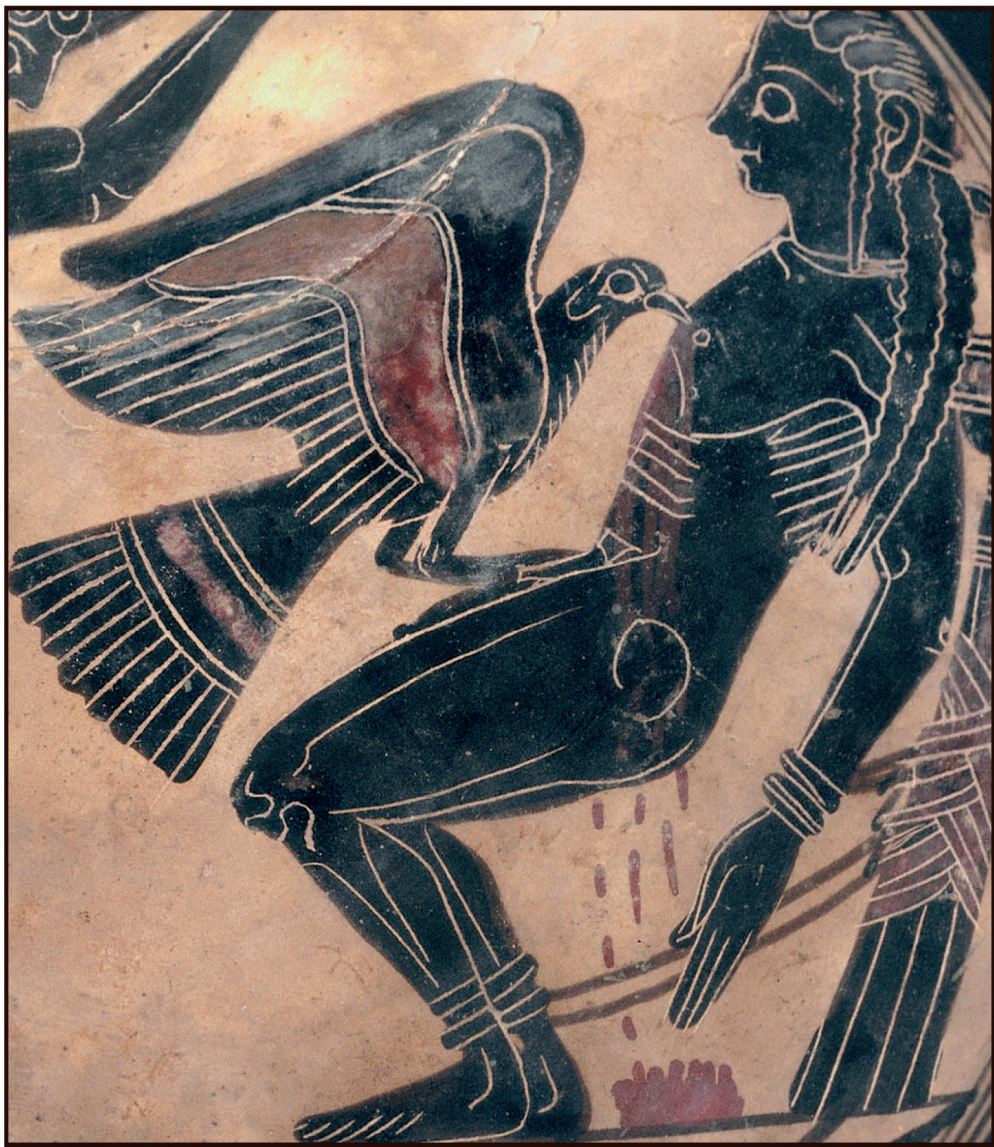


ISSN: 0810-9028

PROMETHEUS

critical studies in innovation



PROMETHEUS

critical studies in innovation

Prometheus is an international, multidisciplinary journal publishing papers on innovation, by which we mean the production, introduction and diffusion of change. *Prometheus* publishes critical papers, those that express – and justify – opinions on innovation issues. We are particularly attracted to papers that challenge prevailing views. We encourage debate. From a core interest in technological change and the information required to bring it about, the journal's scope has expanded to cover:

These approaches include:

- the history of innovation
- information for innovation
- invention and creativity
- research and development
- diffusion of innovation
- science and technology policy
- organisational strategy for innovation
- intellectual property rights
- communication and information technology
- networks and spatial dimensions of innovation
- open innovation
- the social, economic and political environment of innovation
- the management of innovation
- the evaluation of innovation

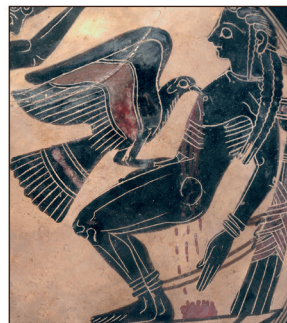
Papers should not be so technical or specialised that they cannot be appreciated by a wide readership that includes academics, practitioners and policy makers and excludes no one.

Visit the journal's homepage at:

www.tandfonline.com/cpro

ISSN: 0810-9028

PROMETHEUS
critical studies in innovation



 **Routledge**
Taylor & Francis Group

GENERAL EDITOR:

Stuart Macdonald,
*School of Management,
University of Leicester, UK*

**Interested in all things
Science, Technology
and Society?**



Become a fan on Facebook
www.facebook.com/RoutledgeSTS



Follow us on Twitter
www.twitter.com/RoutledgeSTS



Register your email to receive information
on journals and books within your subject
area **www.tandfonline.com/eUpdates**

SUBMIT YOUR PAPER

See the "Instructions for Authors"
tab at the journal's homepage.

**Discover our Science, Technology and
Society journals: bit.ly/stsjournals**